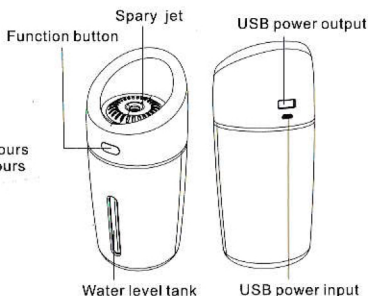


# Operating manual of L8 humidifier

## Product parameter

Product name: L8 humidifier  
Working voltage: DC 5V  
Working current: 450 mA  
Output voltage: 5V/1A  
Use power: 2.5W Water tank capacity: 320 mL  
Spray amount: 30-40 mL/H  
Continuous spray mode time: about 8 hours  
Intermittent spray mode time: about 16 hours  
Product size: 77\*77\*169 mm  
Material: ABS/PP/silica gel  
Product weight: 190 g  
Quality inspection: qualified products  
Executive standard: GB 4206.1-2005  
GB 4706.48-2009  
Place of origin: Shenzhen, China



## Operating instructions

### Spray operation:

turn on the power, click the button, and open the continuous spray mode; Click again to open the intermittent spray mode; (spray for 3 seconds and stop for 3 seconds), click the button for the third time to close all spray modes. (in this cycle)

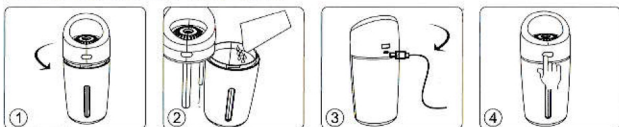
### Night light operation:

Long press the function button for the first time for 1.5 seconds, turn on the night light colour gradual-change mode, and turn on USB output power. Long press function button for the second time, fix the night light to the current colour. Long press the function button for the third time and turn off the night light mode. Long press the function button for the fourth time and close USB output power. (in this cycle)

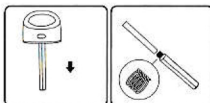
### Anti-dry burning:

Set the continuous spray mode with automatic power off after 8 hours; Set Intermittent spray mode with automatic power off after 16 hours.

## Demonstration of the steps



1. Turn counter clockwise to open the upper cover.
2. Unscrew the top cover and add proper water to the tank.
3. Turn clockwise and tighten the upper cover to connect power supply.
4. Click or long press the function button to operate the humidifier.



## Cotton swab replacement

1. Pull out the cotton rod tube and replace the cotton rod
2. Please note the bottom spring when replacing

### Product standard configuration:

One humidifier, one data cable, one manual, one cotton rod.